



**On the public release of carbon dioxide flux estimates  
based on the observational data by  
the Greenhouse gases Observing SATellite "IBUKI" (GOSAT)**

**December 5, 2012**

National Institute for Environmental Studies (NIES)  
Ministry of the Environment, Japan (MOE)  
Japan Aerospace Exploration Agency (JAXA)

**Tatsuya Yokota**, Head, Satellite Remote Sensing Section  
Center for Global Environmental Research (CGER), NIES  
(+81-29-850-2550)

**Shamil Maksyutov**, Head, Biogeochemical Cycle Modeling  
and Analysis Section, Center for Global Environmental Research (CGER), NIES  
(+81-29-850-2212)

**Hiroshi Tsujihara**, Director, Office for Global Environment Research, MOE  
(+81-3-3581-3351: ext. 6730),

**Yoshitomo Mori**, Deputy Director (ext. 6731),

**Atsushi Goto**, Chief (ext. 6756)

**Public Affairs**, Press Group, JAXA (+81-50-3362-4374)

The Greenhouse gases Observing SATellite "IBUKI" (GOSAT), developed jointly by the Ministry of the Environment Japan, the National Institute for Environmental Studies, and the Japan Aerospace Exploration Agency (hereinafter the Three Parties), is the world's first satellite designed specifically for monitoring atmospheric carbon dioxide (CO<sub>2</sub>) and methane (CH<sub>4</sub>) from space. The satellite has been in operation since its launch on January 23, 2009.

The Three Parties will now publicly distribute the data of global CO<sub>2</sub> fluxes on a monthly and regional basis for the one-year period between June 2009 and May 2010. These flux values were estimated from ground-based CO<sub>2</sub> monitoring data and improved GOSAT-based CO<sub>2</sub> concentration data.

It has been confirmed that uncertainties in CO<sub>2</sub> flux estimates can be reduced by the addition of GOSAT data to the ground-based observations. This is the first concrete demonstration of the utility of satellite-based concentration data in the estimation of global CO<sub>2</sub> fluxes.

It is expected that this progress in the field of global carbon cycle research will lead to more reliable climate change prediction and to the development of effective environmental policies for mitigating global warming in the future.

In order to obtain better CO<sub>2</sub> flux estimates, the Three Parties will continue the effort of refining the data processing algorithms for the retrieval of CO<sub>2</sub> concentrations from GOSAT data and the estimation of CO<sub>2</sub> fluxes.

## **1. Summary of the data product release**

### (1) Net CO<sub>2</sub> flux estimates

The Three Parties will publicly distribute the monthly estimates of net CO<sub>2</sub> fluxes (Note 1) for 64

sub-continental regions from June 2009 to May 2010. These flux values were estimated from the global distribution of CO<sub>2</sub> concentration retrieved from GOSAT observational data and ground-based CO<sub>2</sub> monitoring data (Note 2), using an atmospheric tracer transport model (Note 3) and a Bayesian inverse modeling scheme (Note 4). Further explanations of the net CO<sub>2</sub> flux estimation technique are found in the appendix to this document (attached). As examples, the net CO<sub>2</sub> fluxes for July 2009 and January 2010 are presented in Figure 1.

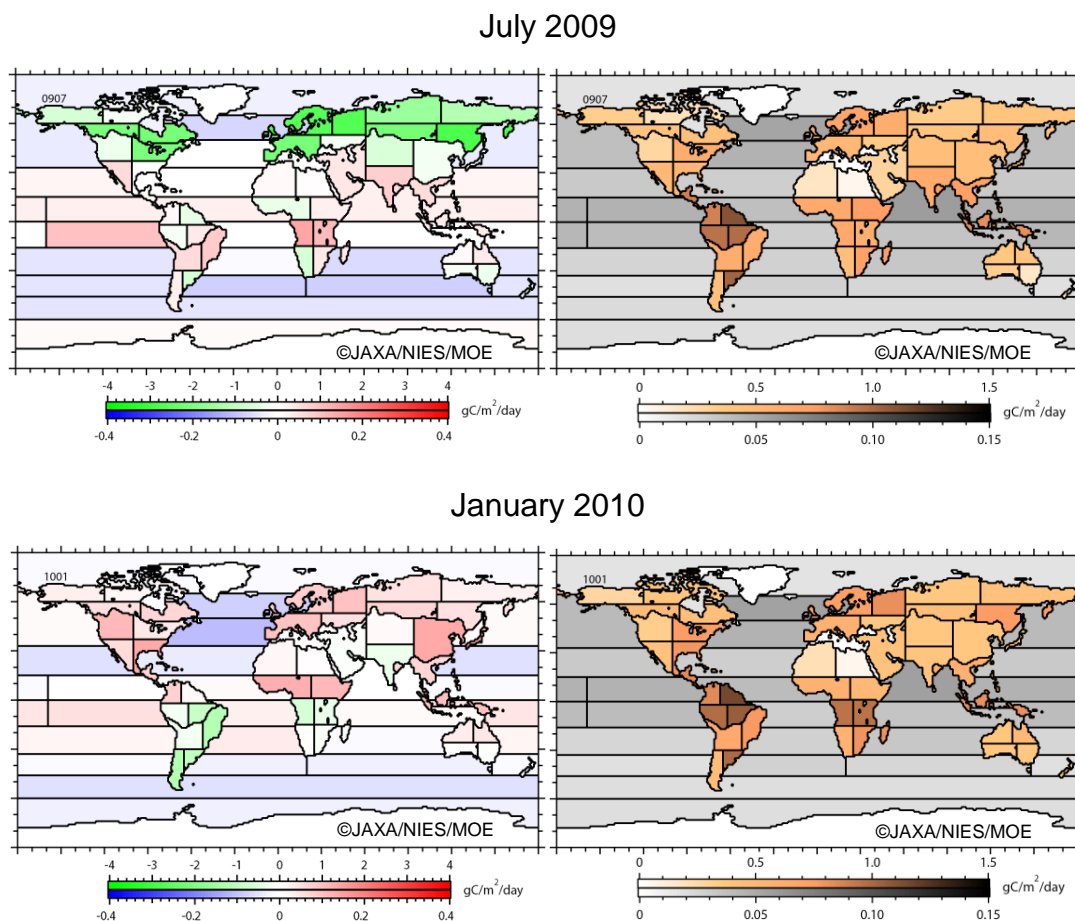


Figure 1 Net CO<sub>2</sub> fluxes in 64 regions (left) and their uncertainties (right) estimated from both ground-based monitoring data and GOSAT data. Results for July 2009 (summer in the Northern Hemisphere) and January 2010 (winter in the Northern Hemisphere) are shown. The upper and lower color-coded scales are for land and oceanic regions, respectively. Positive values indicate net emission, and negative values show net absorption. Unit: gC/m<sup>2</sup>/day (see Note 5 for explanation).

## (2) Reduction of uncertainties in flux estimates

It has been confirmed that uncertainties in CO<sub>2</sub> flux estimates can be reduced by as much as 40% (annual average) by adding GOSAT data to the ground-based monitoring data. In particular, uncertainties of CO<sub>2</sub> fluxes estimated for regions that are not covered by the ground-based monitoring network (e.g. the western seaboard regions of central Africa, southeastern Africa, the Middle and Near East, and India) were reduced by 20-30% (Figure 2). With these reduced uncertainties, it is now possible to determine whether these poorly-sampled regions act as net sinks or sources (Note 6) of CO<sub>2</sub>.

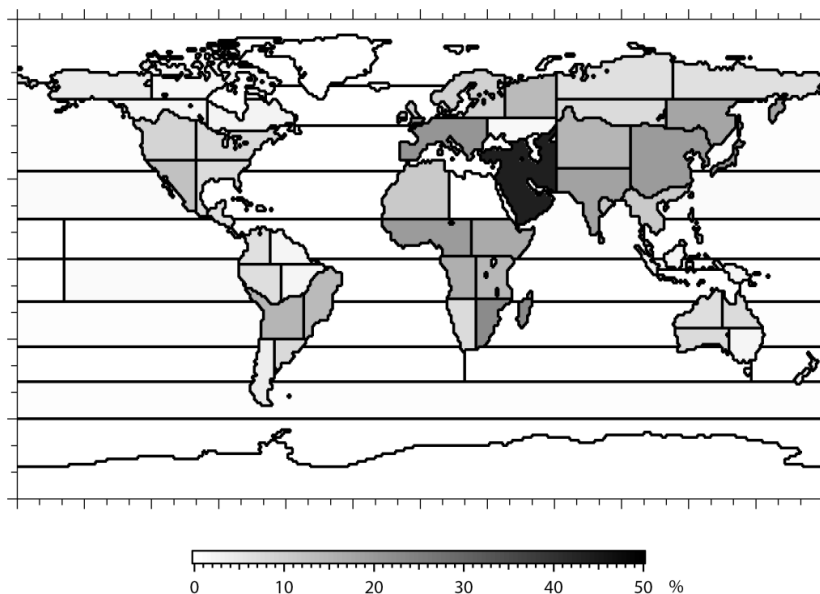


Figure 2 Rate of reduction in the uncertainty of monthly surface CO<sub>2</sub> flux estimates, achieved by adding GOSAT data to ground-based monitoring data. The values shown are annual means over the analysis period from June 2009 to May 2010.

### (3) Simulation of CO<sub>2</sub> distribution in the three-dimensional space

Based on the above-mentioned CO<sub>2</sub> flux estimates, global three-dimensional CO<sub>2</sub> distributions have been simulated. These CO<sub>2</sub> maps will now also be released to the general public. It should be noted that these are the products of model simulations and include uncertainties intrinsic to modeling (the results and more details can be found in the appendix). The simulation results will be viewable at the NIES GOSAT Project website. (URL: <https://data.gosat.nies.go.jp/> – Click on "Gallery" in the left column to access the figures.)

## 2. Next steps

### (1) Expanding temporal coverage

CO<sub>2</sub> flux estimates for 64 regions will be released for the period extending from June 2009 to May 2010 at this time. This time interval will later be extended to May 2011. The extended results will then be released to affiliated researchers, selected by means of GOSAT Research Announcements for Principal Investigators, in order for these estimates to be evaluated and verified. In addition, we will evaluate the accuracy and consistency of the results by means of comparisons with independent flux estimation results from other research groups. After the evaluation mentioned above, the extended data product will be released to the general public.

### **Additional information: development of a GOSAT follow-on mission**

To further improve the accuracy of global flux estimates, the capability of global, space-based greenhouse gas observation must be enhanced. Today, GOSAT is the only satellite making these observations. This year, the Three Parties have begun the process of developing GOSAT-2, a GOSAT successor with enhanced observing capabilities, aiming for a launch in 2017.

In developing GOSAT-2, the Three Parties also plan to refine the data processing algorithms used to analyze the satellite observational data and to estimate CO<sub>2</sub> fluxes.

As space missions similar to GOSAT-2 are being planned and implemented by the U.S. and by other nations, the Three Parties will seek to broaden the international cooperation on space-based greenhouse gases observation.

#### **Notes**

1) Difference between the sum of CO<sub>2</sub> emissions (anthropogenic emissions, wildfire emissions, and respiration by soil and terrestrial plants) and that of absorptions (uptake by terrestrial plants and oceans) on a regional basis.

2) Ground-based CO<sub>2</sub> network data provided by the U.S. National Oceanic and Atmospheric Administration (GLOBALVIEW-CO2). Data available online at <http://www.esrl.noaa.gov/gmd/ccgg/globalview/index.html>.

3) A computer program for modeling the transport and diffusion of atmospheric trace gases such as CO<sub>2</sub> and CH<sub>4</sub>. The program is used to simulate spatial and temporal changes in the distribution of those gases. An atmospheric tracer transport model developed at NIES was used for this analysis. For the atmospheric transport simulations, the JCDAS meteorological data provided by the JRA-25 long-term reanalysis project, promoted by the Japan Meteorological Agency and the Central Research Institute of Electric Power Industry, were used.

4) A scheme based on Bayes' rule to infer parameters from observational data. Detailed explanations on the data processing algorithm can be found in a peer-reviewed paper by Maksyutov et al. (2012): Regional CO<sub>2</sub> flux estimates for 2009-2010 based on GOSAT and ground-based CO<sub>2</sub> observations, *Atmos. Chem. Phys. Discuss.*, **12** 29235-29288, doi: 10.5194/acpd-12-29235-2012.

5) gC/m<sup>2</sup>/day: a unit for net CO<sub>2</sub> flux. It expresses the net amount of CO<sub>2</sub>, converted into the amount of carbon, exchanged in one square meter of surface in one day.

6) Sources and sinks of CO<sub>2</sub>: Sources are processes that emit CO<sub>2</sub> into the atmosphere. Sinks are processes that absorb CO<sub>2</sub> from the atmosphere.

#### **[Contact Information]**

##### **Data analysis results and GOSAT data:**

Dr. Tatsuya Yokota, Head, Satellite Remote Sensing Research Section, CGER, NIES / NIES  
GOSAT Project Leader

Phone: +81-29-850-2550

+81-80-2103-6396 (during December 3, 2012 and December 7, 2012, only)

Dr. Shamil Maksyutov, Head, Biogeochemical Cycle Modeling and Analysis Section, CGER,  
NIES / NIES GOSAT Project Sub-Leader

Phone: +81-29-850-2212

##### **GOSAT, onboard sensors, and observation status:**

Mr. Masakatsu Nakajima, GOSAT Mission Manager, Satellite Applications and Promotion  
Center, Space Applications Mission Directorate, JAXA

Phone: +81-90-2155-8220 (during December 3, 2012 and December 7, 2012)

## **On the estimation of regional CO<sub>2</sub> fluxes from GOSAT data and the simulation of three-dimensional CO<sub>2</sub> concentration distributions based on the flux estimates**

The GOSAT Project, a joint undertaking of the Ministry of the Environment Japan, the National Institute for Environmental Studies, and the Japan Aerospace Exploration Agency, has been providing the general public with the global distribution data of CO<sub>2</sub> concentrations (column-averaged dry air mole fractions of CO<sub>2</sub>, hereafter referred to as X<sub>CO<sub>2</sub></sub>) retrieved from GOSAT data obtained over clear-sky regions. The X<sub>CO<sub>2</sub></sub> retrievals were updated in June 2012 and the data have been made available to the general public as version 2 of the GOSAT FTS SWIR Level 2 data product. Through comparison with reference data obtained with high-resolution Fourier transform spectrometers installed at ground-based observational sites, the mean and standard deviation of the differences (biases) were found to be -1.2 ppm and 2.0 ppm, respectively, which are much smaller than the corresponding values for version 1 data product. The number of the concentration data also increased by 30 to 50% (depending on the season) compared to the version 1 data product.

Researchers of the Project estimated regional CO<sub>2</sub> fluxes from the improved GOSAT X<sub>CO<sub>2</sub></sub> retrievals and from data collected by networks of surface CO<sub>2</sub> monitoring stations, via inverse modeling. Until recently, regional CO<sub>2</sub> fluxes were inferred from the ground-based network data obtained at about 200 monitoring stations around the globe. Since many of the monitoring stations are located in the developed nations, the uncertainties of fluxes estimated for regions located far from the monitoring networks were sizable. The researchers confirmed that these uncertainties were reduced by using the GOSAT X<sub>CO<sub>2</sub></sub> retrievals. The regional CO<sub>2</sub> flux estimates and their uncertainties calculated for twelve months from June 2009 to May 2010 will now be made available to the general public as the GOSAT Level 4A data product.

### **1. Method of CO<sub>2</sub> flux estimation**

CO<sub>2</sub> fluxes for 64 regions of the globe (Figure 1, left) were estimated on a monthly basis from both the GOSAT X<sub>CO<sub>2</sub></sub> retrievals and ground-based CO<sub>2</sub> monitoring data (GLOBALVIEW-CO<sub>2</sub>; hereafter referred to as GV). The locations of the GV monitoring stations are shown on the right panel of Figure 1. Gaps in the ground-based monitoring network are found in South America, Africa, Middle and Near East, and Asia. Prior to their use in the inverse modeling process, the weekly GV values were converted into monthly means. The GOSAT X<sub>CO<sub>2</sub></sub> retrievals, after correcting their biases by adding 1.2 ppm to all X<sub>CO<sub>2</sub></sub> values, were gridded to 5°×5° latitude-longitude grids and averaged on a monthly basis.

As examples, the GV values and the bias-corrected GOSAT X<sub>CO<sub>2</sub></sub> retrievals for July 2009 and January 2010 (summer and winter in the Northern Hemisphere, respectively) are displayed in Figure 2. These two panels show that GOSAT X<sub>CO<sub>2</sub></sub> retrievals successfully fill out the gaps in the ground-based monitoring network, except for the high-latitude regions of the Northern Hemisphere where local solar zenith angles are low, and for regions that are frequently covered by clouds and aerosols.

Figure 3 shows the regional CO<sub>2</sub> flux estimates and their uncertainties for these selected months. It should be noted here that with the computation scheme used, the July and January fluxes were estimated not only from observations in the corresponding months but also from neighboring months. The results for

July, during which the photosynthetic activity of terrestrial plants in the Northern Hemisphere is high, show that many regions in the Northern Hemisphere are net sinks of CO<sub>2</sub> (indicated with green color). Most of these regions in January, during which the plant photosynthesis is generally weak in the Northern Hemisphere, are shown to be net sources of CO<sub>2</sub> (red color). Region #20 (Figure 1, left) is mostly desertic and its net CO<sub>2</sub> balance throughout the one-year period was estimated to be nearly zero.

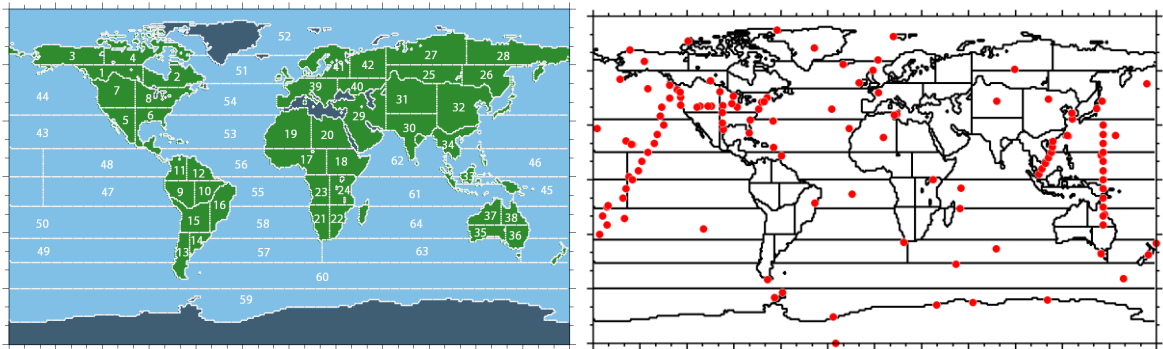


Figure 1. Left: Boundaries of the 64 regions used for inverse modeling. The numbers embedded in the figure are region IDs. Regions in dark blue are not considered in the flux estimation. Right: locations of the ground-based monitoring stations (red dots; including airborne and ship-based sites) whose data were used in this analysis.

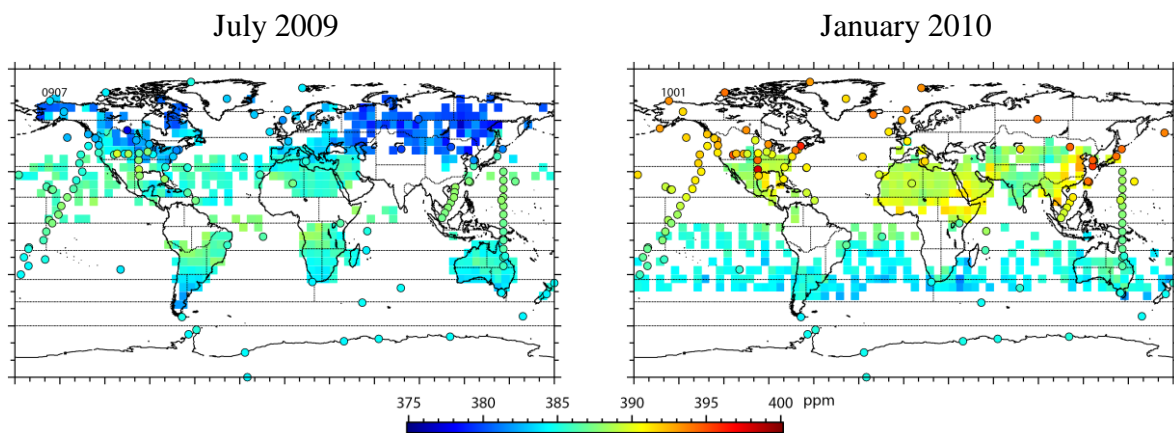


Figure 2. 5°×5° gridded GOSAT X<sub>CO<sub>2</sub></sub> retrievals (squares) and ground-based GV concentrations (circles) used as input for the inverse modeling (monthly means). Left: July 2009 (summer in the Northern Hemisphere). Right: January 2010 (winter in the Northern Hemisphere).

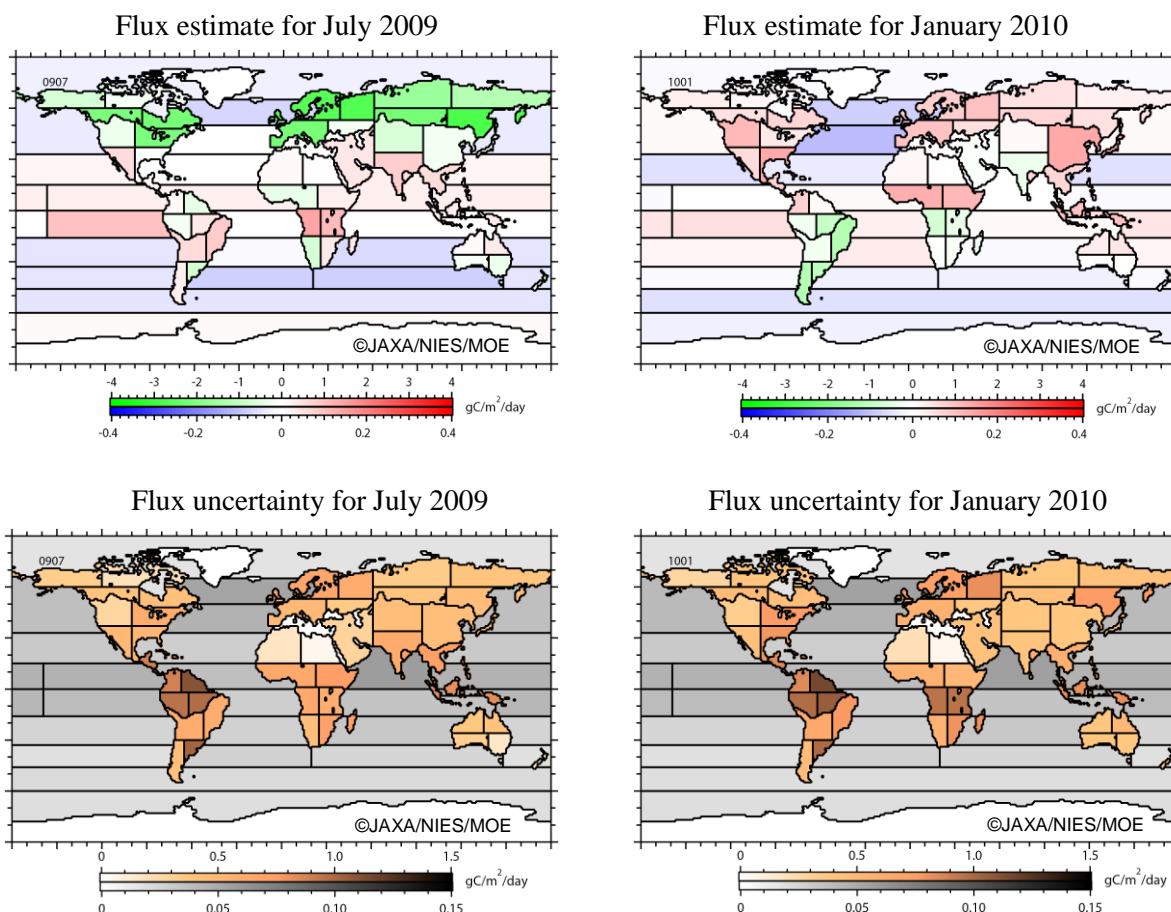


Figure 3. Fluxes (upper panels) and uncertainties (lower panels) estimated for 64 regions. Left: July 2009 (summer in the Northern Hemisphere). Right: January 2010 (winter in the Northern Hemisphere).

## 2. Evaluating the utility of GOSAT data

### (1) Uncertainty of flux estimates

To evaluate the utility of GOSAT  $X_{CO_2}$  retrievals for regional flux estimation,  $CO_2$  fluxes and their uncertainties for the 64 regions over the one-year period were inferred from

- 1) GV data only and
- 2) both GV data and GOSAT  $X_{CO_2}$  retrievals.

Here, the utility was evaluated based on the rate of reduction in flux uncertainty (UR) in percent. It is expressed as

$$UR = \left( 1 - \frac{\sigma_{GV + GOSAT}}{\sigma_{GV}} \right) \times 100$$

where  $\sigma_{GV}$  and  $\sigma_{GV+GOSAT}$  denote the uncertainty of a monthly flux value estimated from GV data only and from both GV data and GOSAT  $X_{CO_2}$  retrievals, respectively. Flux estimates associated with larger UR values are considered to be better characterized if the GOSAT  $X_{CO_2}$  retrievals are used in the analysis.

### (2) Uncertainty reduction

It was confirmed that through the addition of GOSAT  $X_{CO_2}$  retrievals to the GV data, the uncertainties of monthly flux estimates for the poorly-sampled regions of the ground-based monitoring network (e.g. South America, Africa, Middle and Near East, and Asia) were reduced by as much as about 60%. Figure 4 shows

annual mean UR values for the 64 regions. The maximum annual-mean reduction rate was approximately 40%.

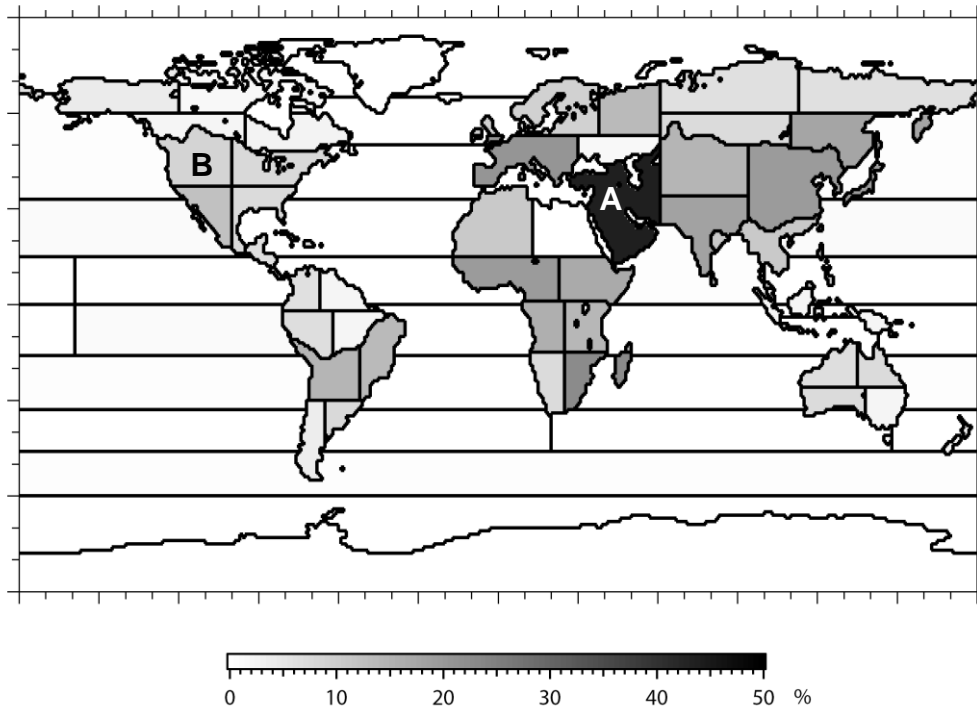


Figure 4. The rate of reduction in the uncertainty of monthly  $\text{CO}_2$  flux estimates, achieved by adding GOSAT  $X_{\text{CO}_2}$  retrievals to GV data. The values shown are annual means over the June 2009-May 2010 analysis period.

As an example, flux estimates and flux uncertainty reduction for two regions, Middle and Near East (Region A in Fig. 4) and north-western temperate North America (Region B in Fig. 4), are contrasted here. Regions A and B represent locations where the ground-based monitoring stations are sparse and dense, respectively. In Figure 5, the time series of monthly fluxes and their uncertainties estimated from GV data only and from both GV data and GOSAT  $X_{\text{CO}_2}$  retrievals are presented. The solid lines in the figure show fluxes estimated from GV data (red) and from both GV data and GOSAT  $X_{\text{CO}_2}$  retrievals (blue). The vertical bars (gray) indicate monthly uncertainty reduction rates (values are shown on the right axis). The green line and the green shaded area show the value of the a priori flux and uncertainty used in the inverse modeling. The a priori flux estimates are based on the inventories of anthropogenic emissions and wildfire emissions, and on model-simulated estimates of  $\text{CO}_2$  exchange by terrestrial vegetation and oceans.

The GV-based monthly fluxes inferred for Region A (Middle and Near East) are associated with large uncertainty (red error bar) since the estimation of the fluxes is based on measurements taken far from this region. By adding the GOSAT  $X_{\text{CO}_2}$  retrievals to the GV data, the uncertainty of the fluxes was reduced significantly (blue error bar). In contrast, a relatively large number of ground-based monitoring stations are located within and nearby Region B (north-western temperate North America). In addition, the data obtained at the ground-based monitoring stations have higher precision than the GOSAT  $X_{\text{CO}_2}$  retrievals. Therefore, they have a larger influence on the determination of the region's flux values. Because of this, the fluxes and their uncertainties estimated from GV data only and from both GV data and GOSAT  $X_{\text{CO}_2}$  retrievals are nearly identical over the analysis period.

In this inverse modeling analysis, the anthropogenic and wildfire emissions were both treated as known,



and the CO<sub>2</sub> exchanges by terrestrial vegetation and oceans were optimized. Therefore, the changes in the flux estimates from red to blue seen in Figure 5, which are associated with larger uncertainty reduction rates, are considered as the result of the flux optimization by the additional information brought by GOSAT observations. For instance, the flux estimates for region A suggests that uptake in June 2009 and release in March and April 2010 by the terrestrial vegetation of this region were both smaller than what were estimated from the ground-based data only, even when the range of uncertainty was taken into account.

The above instance demonstrates that flux estimates for remote regions, located far from the ground-based monitoring stations and thereby associated with large uncertainties (e.g. the western seaboard regions of central Africa, south eastern Africa, Middle and Near East, and India) can be improved if the GOSAT X<sub>CO<sub>2</sub></sub> retrievals are used in the analysis.

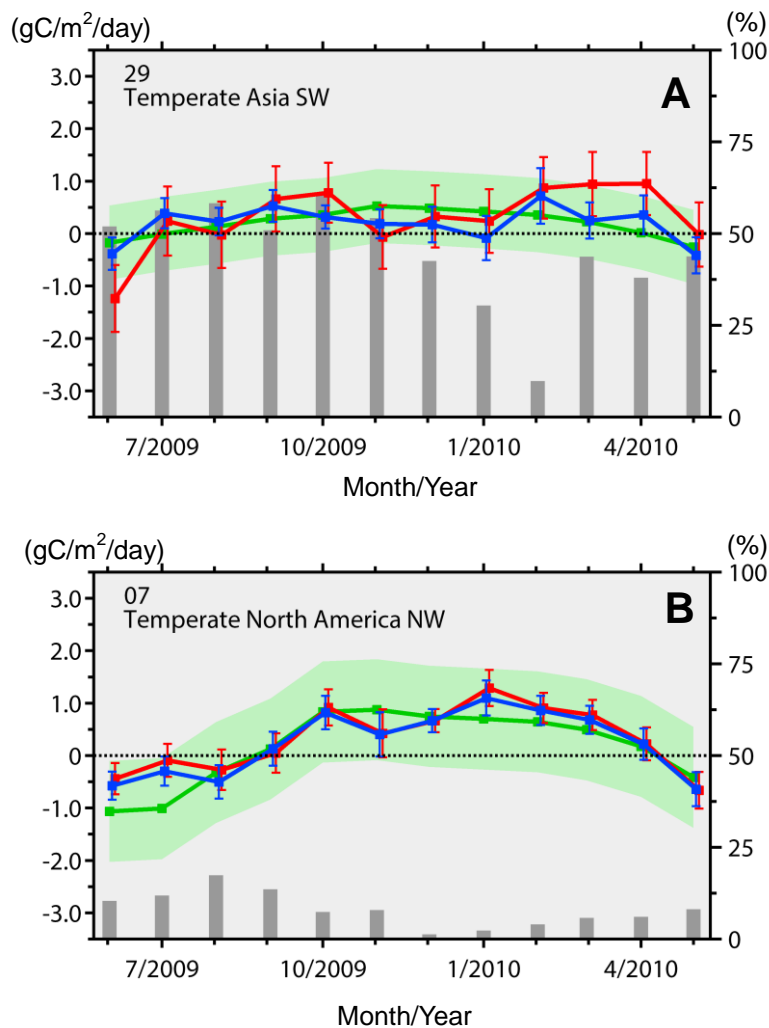


Figure 5. Time series of monthly fluxes and their uncertainties estimated from GV data only (red) and from both GV data and GOSAT X<sub>CO<sub>2</sub></sub> retrievals (blue). The vertical bars (gray) indicate monthly uncertainty reduction rates (values are shown on the right axis). The green line and the green shaded area show the values of the a priori flux and its uncertainty used in the inverse modeling. Upper panel: Middle and Near East (Region A in Figure 4; south western temperate Asia). Lower panel: north western temperate North America (Region B in Figure 4).

It should be noted, however, that these results are dependent on the quality of GOSAT X<sub>CO<sub>2</sub></sub> retrievals. Currently, GOSAT-based X<sub>CO<sub>2</sub></sub> values are also retrieved at several research institutes other than the National Institute for Environmental Studies. Figure 6 shows the mean and spread (one standard deviation) of the

flux estimates for regions A and B based on five independently-retrieved  $X_{CO_2}$  datasets. The green line and the shaded area show the mean and spread. The blue solid line shows the flux estimates based on the GOSAT Level 2  $X_{CO_2}$  retrievals. The spread suggests that flux values can vary depending on which  $X_{CO_2}$  dataset is used for the flux estimation, and that there is still room for further improvement of the  $X_{CO_2}$  retrieval algorithms.

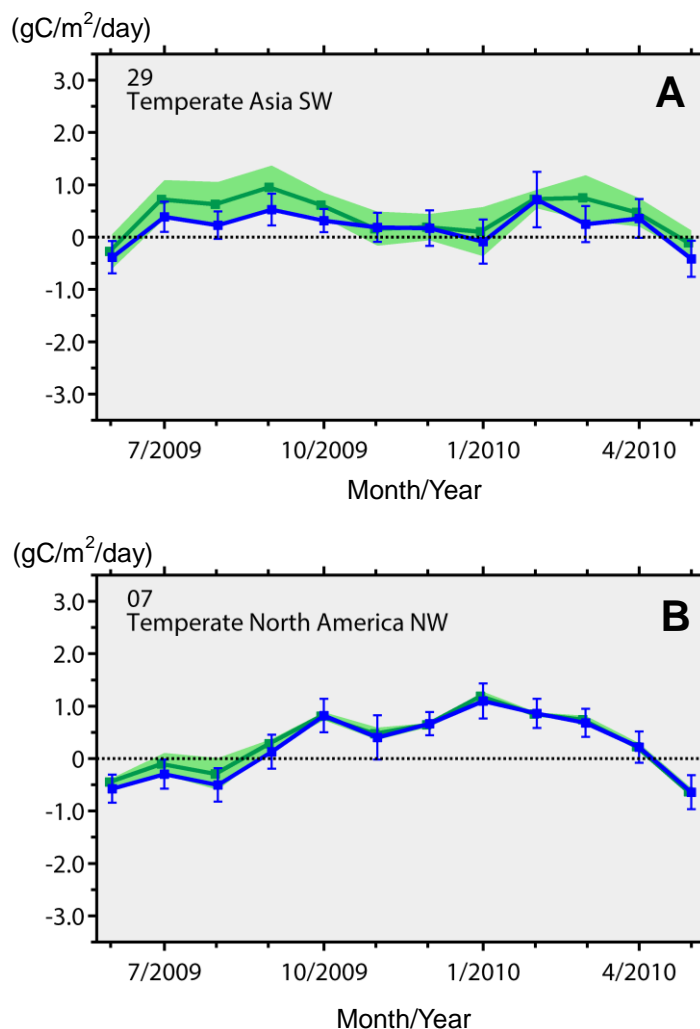


Figure 6. Mean (green solid line) and spread (green shade) of flux estimates for Middle and Near East (Region A in Figure 4) and north-western temperate North America (Region B in Figure 4) based on five independently-retrieved  $X_{CO_2}$  datasets. The blue solid line shows the flux estimates based on the GOSAT Level 2  $X_{CO_2}$  retrievals. The same inverse modeling scheme and a priori data were used for processing each of the five  $X_{CO_2}$  datasets.

The flux estimates obtained at this time are based on the assumption that the bias in the GOSAT Level 2  $X_{CO_2}$  retrievals is uniform throughout the globe and over the one-year analysis period. The flux estimates may change with further research.

### 3. Three-dimensional simulation of CO<sub>2</sub> concentrations based on the monthly flux estimates

The global distribution of CO<sub>2</sub> concentrations in the three-dimensional space can be modeled by using the calculated CO<sub>2</sub> flux estimates. The outcome of such simulation, the six-hourly CO<sub>2</sub> concentration on 2.5 degree latitude-longitude grid at 17 vertical levels, will be distributed to the general public as the GOSAT Level 4B data product.

Figure 7 presents the distribution of simulated CO<sub>2</sub> concentrations (monthly average) at an altitude of approximately 5000 m. Results for July 2009 and January 2010 are shown. The influence of anthropogenic and wildfire emissions are considered in the simulation. These simulation results are expected to be used for carbon cycle studies in regions where neither ground-based CO<sub>2</sub> observations nor GOSAT X<sub>CO2</sub> retrievals are available. The simulated CO<sub>2</sub> concentration is affected by some uncertainty, and should be verified through comparison with ground-based reference values.

The simulation results can be viewed at the NIES GOSAT Project website. (URL: <https://data.gosat.nies.go.jp/> – Click on "Gallery" in the left column to access the plots).

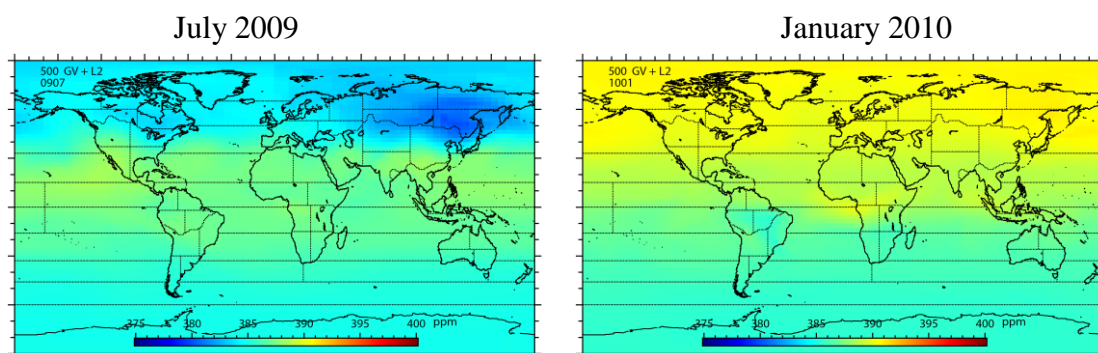


Figure 7. Distribution of simulated CO<sub>2</sub> concentrations (monthly average) at an altitude of approximately 5000 meters. Left: July 2009 (summer in the Northern Hemisphere). Right: January 2010 (winter in the Northern Hemisphere). These are simulation results based on the CO<sub>2</sub> flux estimates obtained and are affected by some uncertainty.